

**CIDER SOLAR FARM
WETLAND AND STREAM DELINEATION REPORT AND FUNCTION AND VALUE ASSESSMENT**

Appendix B Wetland Summary Table

Appendix B WETLAND SUMMARY TABLE



Appendix B. Wetland Summary Table A

Wetland ID	Wetland Acreage Within Study Area (acres)					Associated Stream	Length of Stream within Wetland (feet)	NYS Wetland ID; Class	Latitude of Centroid	Longitude of Centroid	Anticipated Federal Jurisdiction	Anticipated State Jurisdiction	Detailed Figure/Map Sheet Number(s)
	PFO	PSS	PEM	PUB	Total								
WL01	2.16		0.38		2.54	ST01	902	OK-1; 1	43.109950	-78.257210	X	X	2
WL02	1.01				1.01	ST02	818		43.110584	-78.254367	X		2
WL03	0.22				0.22	ST03	783		43.109390	-78.255171	X		2
WL04	0.47	1.32	2.24		4.03	ST06	20		43.106799	-78.257014	X		2
WL05	0.19		0.22		0.41	ST05	2012		43.102054	-78.256775	X		2
WL06			1.17		1.17	ST67	32		43.107620	-78.243770	X		2
WL07		1.99	0.1		2.09	ST07	1548		43.099408	-78.264843	X		1, 9
WL08			0.18		0.18				43.106018	-78.271050	X		1
WL09			0.50		0.5			OK-1; 1	43.107274	-78.259649	X	X	1
WL10			0.77		0.77				43.101440	-78.256718	X		2, 9
WL11			0.27		0.27	ST09	1007		43.088904	-78.275824	X		8
WL12			0.52		0.52	ST09; ST10; ST12	170; 5; 860		43.090709	-78.275454	X		8
WL13	1.01		0.71		1.72	ST13; ST14	437; 349		43.091120	-78.273655	X		8
WL14				0.13	0.13				43.112836	-78.191178	X		5, 6
WL15	0.1			0.41	0.51				43.090794	-78.271014	X		8
WL16			0.57		0.57				43.091221	-78.270636	X		8
WL17	1.09		0.74		1.83	ST15; ST16	40; 1192		43.092230	-78.268567	X		8
WL18	2.25		0.32		2.57				43.088162	-78.247665	X		15
WL19		0.25			0.25				43.087082	-78.251932	X		15
WL20	10.22	0.19	1.32	0.14	11.87	ST17; ST18; ST19; ST20; ST21	499; 187; 453; 87; 284		43.089694	-78.254234	X	X	15
WL21			0.01	0.06	0.07				43.089970	-78.253215	X		15
WL22	8.48				8.48	ST22; ST23; ST56; ST61; ST68	1451; 201; 269; 1275; 1135		43.089401	-78.241968	X	X	9, 10, 15
WL23	0.27				0.27				43.096628	-78.234099	X		10

Wetland ID	Wetland Acreage Within Study Area (acres)					Associated Stream	Length of Stream within Wetland (feet)	NYS Wetland ID; Class	Latitude of Centroid	Longitude of Centroid	Anticipated Federal Jurisdiction	Anticipated State Jurisdiction	Detailed Figure/Map Sheet Number(s)
	PFO	PSS	PEM	PUB	Total								
WL24	6.49				6.49	ST22	745		43.092746	-78.237663	X	X	10, 16
WL25	1.20				1.2			BN-2; 2	43.106472	-78.224031	X	X	3, 4
WL26		0.12	1.65		1.77				43.087357	-78.246729	X		15
WL27	0.08				0.08	ST25; ST26	162; 350		43.090806	-78.246032	X	X	15
WL28	3.32		0.26		3.58	ST24	137	BN-13; 2	43.097349	-78.226653	X	X	10
WL29	12.1	0.09	1.86		14.05	ST24; ST28; ST29		BN-13; 2	43.097535	-78.228462	X	X	10
WL30			0.72		0.72	ST62			43.097327	-78.196002	X		12
WL31	5.82			1.20	7.02	ST27; ST30	874; 186	BN-13; 2	43.095426	-78.223622	X	X	10, 11
WL32			0.03		0.03	ST27	93	BN-13; 2	43.093387	-78.227432	X	X	10
WL33	1.00		0.32		1.32	ST31	957	BN-14; 3	43.087964	-78.219301	X	X	17
WL34	2.75				2.75	ST32; ST33	2034; 44		43.093524	-78.220494	X		11
WL35			0.34		0.34				43.089774	-78.224896	X		16
WL36	2.76				2.76				43.090901	-78.224128	X		11, 16
WL37			0.63		0.63				43.090752	-78.226152	X		16
WL38			0.09		0.09				43.090184	-78.226785	X		16
WL39	0.15	0.08	0.04		0.27				43.090079	-78.231712	X		16
WL40	1.16				1.16			BN-13; 2	43.094667	-78.224728	X	X	10
WL41	1.53				1.53	ST34	772		43.095055	-78.222164	X		11
WL42	2.14				2.14				43.109072	-78.171753	X		7
WL43	0.62		0.01		0.63	ST31	1280		43.090647	-78.217461	X		11
WL44			2.04		2.04				43.073798	-78.217916	X		21
WL45			1.68		1.68	ST35	1505	BN-15; 2	43.080559	-78.218146	X	X	17
WL46	0.31		0.58		0.89			BN-15; 2	43.079186	-78.220781	X	X	17
WL47	0.16		2.41		2.57			BN-1; 3	43.108198	-78.233787	X	X	3
WL48			0.01		0.01			BN-1; 3	43.107843	-78.232864	X	X	3

Wetland ID	Wetland Acreage Within Study Area (acres)					Associated Stream	Length of Stream within Wetland (feet)	NYS Wetland ID; Class	Latitude of Centroid	Longitude of Centroid	Anticipated Federal Jurisdiction	Anticipated State Jurisdiction	Detailed Figure/Map Sheet Number(s)
	PFO	PSS	PEM	PUB	Total								
WL49	1.37				1.37				43.107708	-78.235554	X	X	3
WL50	0.23		1.09		1.32	ST36	2132		43.100120	-78.224394	X		4, 11
WL51	0.50		2.48		2.98				43.106344	-78.233981	X	X	3
WL52	2.81		1.39		4.2	ST37	430	BN-1; 3	43.107745	-78.229217	X	X	3
WL53		1.01	0.59		1.6	ST37; ST69	2258; 536		43.103204	-78.228538	X	X	3
WL54	0.71		0.14		0.85	ST38	476	BN-14; 3	43.085443	-78.214730	X	X	17
WL55	1.68	0.66			2.34			BN-14; 3	43.084495	-78.215293	X		17
WL56	2.09				2.09	ST04	2256		43.107384	-78.253187	X		2
WL57	21.72		0.38		22.1			BN-4; 2	43.109215	-78.186669	X	X	5, 6, 13
WL58			3.38		3.38	ST39; ST42	1141; 635		43.107918	-78.184045	X	X	6, 13
WL59			0.05		0.05				43.111205	-78.186224	X		6
WL60		0.05			0.05			BN-6; 2	43.115076	-78.177852	X	X	6
WL61			0.05		0.05			BN-6; 2	43.115404	-78.174838	X	X	7
WL62	0.24				0.24			BN-6; 2	43.115546	-78.174347	X	X	7
WL63		0.29			0.29			BN-6; 2	43.116003	-78.173307	X	X	7
WL64	9.09				9.09	ST41; ST70	37; 1606	BN-7; 2	43.109040	-78.164125	X	X	7
WL65			0.69		0.69				43.105341	-78.176557	X		13
WL66	2.38		0.22		2.6			BN-9; 2	43.105696	-78.163852	X	X	14
WL67			0.18		0.18				43.106922	-78.184144	X		13
WL68	1.93				1.93	ST52	167		43.099303	-78.180112	X		13
WL69			0.17		0.17				43.103318	-78.188143	X		5, 12, 13
WL70			2.06		2.06	ST44, ST45, ST46	1243; 521; 1498		43.097466	-78.186225	X		12, 13, 70
WL71	2.88				2.88			BN-9; 2	43.103433	-78.167103	X	X	14
WL72	0.22				0.22	ST47	278	BN-10; 2	43.100252	-78.157127	X	X	14
WL73	8.88		0.18		9.06	ST48, ST49	373; 1193	BN-11; 3	43.094416	-78.174710	X	X	14, 19, 20

Wetland ID	Wetland Acreage Within Study Area (acres)					Associated Stream	Length of Stream within Wetland (feet)	NYS Wetland ID; Class	Latitude of Centroid	Longitude of Centroid	Anticipated Federal Jurisdiction	Anticipated State Jurisdiction	Detailed Figure/Map Sheet Number(s)
	PFO	PSS	PEM	PUB	Total								
WL74		0.32			0.32	ST48	5		43.094018	-78.178522	X		19
WL75	0.55				0.55				43.094237	-78.179992	X		19
WL76			0.03		0.03				43.091759	-78.179329	X		19
WL77	1.86				1.86			BN-10/BN-11; 3	43.094765	-78.168664	X	X	20
WL78	1.69				1.69				43.091992	-78.169310	X		20
WL79	0.52				0.52			BN-1; 3	43.109534	-78.228725	X	X	3
WL80			0.03		0.03				43.092441	-78.166381	X		20
WL81	0.58		1.00		1.58	ST53	581		43.099402	-78.204352	X		12
WL82			0.31		0.31				43.100412	-78.212146	X		4, 11
WL83			0.11		0.11				43.100897	-78.220148	X		4
WL84	0.35				0.35			BN-2; 2	43.105508	-78.218419	X	X	4
WL85	1.47				1.47				43.104686	-78.220160	X		4
WL86		1.12			1.12				43.105457	-78.214787	X		4
WL87	1.79				1.79			BN-2; 2	43.109182	-78.209497	X	X	4
WL88	0.55				0.55				43.109919	-78.204428	X		5
WL89	3.09	0.23			3.32	ST54, ST55	34; 19	BN-4; 2	43.107674	-78.204992	X	X	4, 5
WL90	2.74		0.27		3.01			BN-4; 2	43.105421	-78.208903	X	X	4
WL91	8.07		2.85		10.92	ST57	391		43.089492	-78.212522	X		11, 17
WL92	1.32		12.2		13.52	ST32	441		43.096511	-78.211328	X	X	11, 12
WL93			0.47		0.47	ST57	143		43.089698	-78.215158	X		17
WL94	0.03				0.03				43.088964	-78.211689	X		17
WL95	8.75				8.75				43.088173	-78.229806	X		16
WL96	5.82			0.10	5.92	ST58	54		43.091622	-78.206302	X		11, 18
WL97			0.46		0.46				43.092206	-78.203971	X		18
WL98				0.14	0.14				43.099850	-78.260544	X		1, 9

Wetland ID	Wetland Acreage Within Study Area (acres)					Associated Stream	Length of Stream within Wetland (feet)	NYS Wetland ID; Class	Latitude of Centroid	Longitude of Centroid	Anticipated Federal Jurisdiction	Anticipated State Jurisdiction	Detailed Figure/Map Sheet Number(s)
	PFO	PSS	PEM	PUB	Total								
WL99	7.72				7.72			BN-12; 2	43.089506	-78.202351	X	X	18
WL100	11.93				11.93	ST59	869		43.088839	-78.198258	X	X	18
WL101	0.92	1.61			2.53	ST38	90	BN-12; 2	43.085398	-78.210177	X	X	17
WL102			0.10		0.1				43.098699	-78.217144	X		11
WL103	4.92		0.37		5.29	ST63	1854	OK-11; 2	43.088192	-78.269215	X	X	8
WL104	0.36				0.36				43.089911	-78.274552	X		8
WL105			0.09		0.09				43.088926	-78.273356	X		8
WL106			0.22		0.22				43.088479	-78.270629	X	X	8
WL107	1.5				1.5			OK-11; 2	43.088230	-78.272114	X	X	8
WL108		0.36			0.36			OK-1; 1	43.106987	-78.262511	X	X	1
WL109			0.21		0.21	ST64, ST65	648; 5		43.095844	-78.277658	X		8
WL110		1.50			1.5				43.097691	-78.240613	X		10
WL111	1.93				1.93				43.098010	-78.236822	X		10
WL112	0.88				0.88				43.105561	-78.245925	X		2
WL113		0.46	2.24		2.7				43.107464	-78.242517	X		2
WL114	0.19	0.04	0.50		0.73	ST72	108.18	N/A	43.110868°	-78.197343°			5
WL115	4.93		1.82		6.75			N/A	43.094891°	-78.253460°	X		9
WL116	0.58		0.09		0.67	ST75	455.84	N/A	43.092585°	-78.255716°	X		9
WL117	3.98				3.98	ST74	73.52	N/A	43.092054°	-78.255630°	X		9
WL118			0.04		0.04	ST75	32.81	N/A	43.093263°	-78.257115°	X		9
WL119			0.26		0.26			N/A	43.096445°	-78.257064°			9



Appendix B. Wetland Summary Table B

Wetland ID	Dominant Vegetation	Hydric Soil Indicators ¹	Wetland Hydrology Indicators ¹
WL01	red maple, silver maple	S5, F6	B16, C3, D2, D5
WL02	Eastern cottonwood, black willow, green ash, creeping jenny, common reed, riverbank grape	S5	B16, D2, D5
WL03	Eastern cottonwood, green ash, riverbank grape	S5	B16, D2, D5
WL04	reed canary grass	F3	D2, D5, C3, C9
WL05	eastern cottonwood, green ash, narrowleaf cattail, curly dock, gray dogwood	F3	B10, C9, D2, D5
WL06	soybean	F3, F6	C9, D2
WL07	lance-leaved aster, narrowleaf cattail, gray dogwood, box-elder, fowl bluegrass, black willow	F3	A1, A2, A3, C9, D2, D5
WL08	blunt spikerush, reed canary grass	F3	C9, D2, D5
WL09	red-top grass, fowl bluegrass, devil's beggarsticks, black willow	F3, F6	C3, D2, D5
WL10	straw-colored flatsedge, velvetleaf	F3	B6, D2
WL11	rice cutgrass, narrowleaf cattail	F3	C3, B10, C9, D2, D5
WL12	rice cutgrass	F3	B6, B10, C9, D2, D5
WL13	water purslane	F3	A3, D2, D5
WL14	n/a	*Open water	A1
WL15	reed canary grass, green ash	F3	A1, D2, D5
WL16	*corn	F3	A1, A2, D1, D2
WL17	silver maple, raspberry, flat-top goldenrod, common boneset, Canadian goldenrod, riverbank grape, Virginia creeper	F3, F6	B16, C9, D2, D5
WL18	eastern cottonwood, green ash, silky dogwood, tatarian honeysuckle, reed canary grass, lance-leaved aster, rivebank grape, Virginia creeper	F3, F6	D2, D5
WL19	gray dogwood, green ash, slender rush, broom sedge	F3	D2, D5
WL20	gray dogwood, green ash, fox sedge, reed canary grass, crested sedge, multiflora rose, barnyard grass, soft rush, pale touch-me-not, hispid buttercup, poison ivy, riverbank grape	F3, F6	B10, B16, D2, D5
WL21	black willow, water celery, swamp milkweed, dark green bulrush, riverbank grape	*Soils assumed hydric	A1, A2, A3, B7, D2, D5

Wetland ID	Dominant Vegetation	Hydric Soil Indicators ¹	Wetland Hydrology Indicators ¹
WL22	Eastern cottonwood, black willow, shining willow, silky dogwood riverbank grape	F3	A1, A2, A3, B10, B16, D5
WL23	green ash, eastern cottonwood, black willow, silky dogwood, flat-top goldenrod, lance-leaved aster	F3	D2, D5
WL24	green ash, eastern cottonwood, buckthorn, devil's beggarsticks, poison ivy	F6	D2, D5
WL25	green ash, bush honeysuckle, Virginia creeper, riverbank grape	F3	B16, C9, D2
WL26	reed canary grass, gray dogwood, green ash, multiflora rose, lance-leaved aster, narrowleaf cattail	F3	C3, D5, D2
WL27	black willow, green ash, rice cutgrass	S4	D2, D5, B10
WL28	green ash, gray dogwood, lance-leaved aster, sensitive fern, riverbank grape	F3, F6	C3, D2, D5
WL29	black willow, eastern cottonwood, sandbar willow, hemp dogbane, gray dogwood, yellow nutsedge, lady's thumb, barnyard grass, green ash, bush honeysuckle, common reed, broom sedge, dark green bulrush, water hemlock, poison ivy, riverbank grape	F3, F6	A1, A2, A3, C3, C9, D2, D5
WL30	lady's thumb, barnyard grass, straw-colored flat sedge	F3, F6	A1, A2, A3, D2, D5
WL31	peachleaf willow, black willow, box-elder, common reed	F3	D2, D5
WL32	eastern cottonwood, peachleaf willow, sweet joe pye weed, rice cutgrass	F6	D2, D5, B10
WL33	red-top grass, hemp dogbane, fowl bluegrass, reed canary grass, green ash, eastern cottonwood, silver maple	F3, F6	A2, A3, D2, D5, C9
WL34	eastern cottonwood, green ash, Virginia creeper	*Problematic	B10, B16, D2, D5
WL35	red-root amaranth, barnyard grass, lady's thumb, queen anne's lace	F3	D2, C9
WL36	silver maple	F3	D2, D5
WL37	barnyard grass	F3	D2, C9
WL38	barnyard grass, blunt spikerush, lady's thumb	F3	C9, D2, D5
WL39	green ash, black willow, buttonbush, blunt spikerush, narrowleaf cattail, barnyard grass, bittersweet, panicum virgatum, riverbank grape, devil's beggarsticks	F3, F6	A2, A3, B16, C9, D2, D5
WL40	green ash, black willow, buckthorn, common reed, awl fruited sedge	A11	D2, D5
WL41	eastern cottonwood, lance-leaved aster, green ash, hawthorn, bush honeysuckle, water hemlock, skunk cabbage	F3, F6	C3, B16, D2, D5
WL42	jewelweed, creeping bentgrass, lance-leaved aster, creeping jenny, green ash, swamp white oak, silver maple	F3	D2, D5



Wetland ID	Dominant Vegetation	Hydric Soil Indicators ¹	Wetland Hydrology Indicators ¹
WL43	box-elder, eastern cottonwood, bush honeysuckle, reed canary grass, devil's beggarsticks	F6	D2, D5
WL44	reed canary grass	F6	D2, D5, C9
WL45	narrowleaf cattail, lady's thumb	F3	A1, A2, A3, D2, D5, C9
WL46	Reed canary grass, buckthorn, green ash, joe pye weed, dark green bulrush, flat-top goldenrod, giant goldenrod	F3	D2, D5, C9
WL47	Canada goldenrod, Gray's sedge, creeping bentgrass, poison ivy, false nettle, straw-colored flatsedge	F6	A1, A2, B6, D5
WL48	creeping bentgrass	F3	A1, A2, A3, D5
WL49	spicebush, red maple, American elm, enchanter's nightshade	F3	D2, D5
WL50	green ash, reed canary grass	F3	B10, D2, D5
WL51	American elm, red maple, silver maple, garlic mustard, reed canary grass, straw-colored flatsedge, Canada goldenrod, velvetleaf	A11, F3	D2, D5
WL52	barnyard grass	A11	D2, D5, C9
WL53	narrowleaf cattail, reed canary grass, green ash, buckthorn, silky dogwood	F3	D2, D5, C9
WL54	reed canary grass, common reed	*Soils assumed hydric	A2, A3, D2, D5
WL55	common reed, green ash, giant goldenrod, creeping jenny	A11, F6	B16, C3, D2, D5, C9
WL56	box-elder, lesser cocklebur, pale touch-me-not, riverbank grape	*Soils assumed hydric	A1, A2, A3, D2, D5
WL57	green ash, spicebush, American hornbeam, common woodland sedge, jewelweed, poison ivy	F3	B6, B10, D2
WL58	narrowleaf cattail, rice cutgrass, timothy grass, lesser cocklebur, foxtail sedge	F6	A1, B10, B13, C3
WL59	rice cutgrass, field horsetail, hop-like sedge	F3	B4, B8, B6, D2
WL60	frost aster, giant goldenrod	F6	A1
WL61	black willow, hop-like sedge, soft rush, dark green bulrush, foxtail sedge	F3, F6	B10, D2
WL62	green ash, eastern cottonwood, tatarian honeysuckle, jewelweed, riverbank grape, Virginia creeper	A11, F3	B4, B6
WL63	reed canary grass, rice cutgrass	F6	B6, B8
WL64	American basswood, green ash, spicebush, softleaf sedge	F3	B9, B10, B16
WL65	narrowleaf cattail, rice cutgrass riverbank grape	F3	A1, A2, A3



Wetland ID	Dominant Vegetation	Hydric Soil Indicators ¹	Wetland Hydrology Indicators ¹
WL66	green ash, silver maple, tatarian honeysuckle, softleaf sedge, reed canary grass, hemp dogbane, hop-like sedge, fowl mannagrass	F3, F6	B9, B10, B16, D2
WL67	eastern cottonwood, green ash, retrorse sedge, crested sedge, orchard grass, yellow nutsedge, great bladder sedge, fragrant flatsedge	A11, F3	A3, B2, B4, B6, B9, B16
WL68	giant goldenrod, crested sedge, riverbank grape	F3	A1, B10
WL69	eastern cottonwood, green ash, buckthorn, Japanese stilt grass, riverbank grape, Virginia creeper	F6	B1, B6, B16
WL70	spearmint, swamp milkweed, garlic mustard, giant goldenrod, oxeye daisy	F3	B10, D2
WL71	red maple, American beech, false nettle, jumpseed, garlic mustard, whitegrass, Virginia creeper	F6	A1, B6, B9, B10, B16
WL72	green ash, buckthorn, tatarian honeysuckle, prostrate knotweed, narrowleaf cattail, American water plantain	F3	A1, B13, C8
WL73	silver maple, green ash, eastern cottonwood, multiflora rose, tatarian honeysuckle, rice cutgrass, fowl mannagrass, garlic mustard, Japanese knotweed, jewelweed, slender path rush, reed canary grass, giant goldenrod, Virginia creeper	F3, F6	A1, A2, B8, B9, B10, B13, B16
WL74	white willow, green ash, common reed, Japanese knotweed, narrowleaf cattail, Virginia creeper, riverbank grape	F6	B9, B13, B16
WL75	eastern cottonwood, green ash, tatarian honeysuckle, yellow nutsedge, jumpseed, riverbank grape	F5	B9, B10, B16
WL76	narrowleaf cattail, rice cutgrass, swamp milkweed, riverbank grape	F3	B9, C3
WL77	American basswood, green ash, tatarian honeysuckle, sensitive fern, Virginia creeper, riverbank grape	F3	B9, B16
WL78	silver maple, green ash, ramp, garlic mustard, jack-in-the-pulpit	F3	B10, B16, B9, B4
WL79	silver maple, American elm, calico aster, woodreed, fowl mannagrass, lance-leaved aster	F3, F6	D2, D5
WL80	yellow nutsedge, rice cutgrass	F3	A1, D2
WL81	gray dogwood, green ash, purplestem aster, dark green bulrush, foxtail sedge, slender path rush, flattop goldenrod, giant goldenrod, jumpseed, Virginia creeper	F3, F6	A1, B10, B13, D2
WL82	joe pye weed, foxtail sedge, narrowleaf cattail, great willowherb	F3	A1, A2, A3, B4, B8
WL83	wild-rye, great willowherb, clover	F3	A1, B3, C13
WL84	red maple, green ash, tatarian honeysuckle, foxtail sedge, narrowleaf cattail, Virginia creeper, common nutgrass, bladder sedge	F3, F6	B9, B10, B16
WL85	silver maple, green ash, fowl mannagrass, crested sedge	F6	B8, B9, B16
WL86	flat-top goldenrod, slender path rush, giant goldenrod	F3	B10, D2



Wetland ID	Dominant Vegetation	Hydric Soil Indicators ¹	Wetland Hydrology Indicators ¹
WL87	silver maple, green ash, eastern cottonwood, three-seeded sedge, Canadian moonseed, Virginia creeper	F3	B4, B9, B16
WL88	white willow, eastern cottonwood, green ash, foxtail sedge, crested sedge	F3, F6	B9, B16
WL89	witch-hazel, green ash, Hamamelis virginiana, chokecherry, common reed, fowl mannagrass, sensitive fern, lady's thumb, ragweed, blunt spikerush	F6	A2, A3, B5, B9, B10, B13, B16
WL90	green ash, white willow, sandbar willow, narrowleaf cattail	F3	A1, A2, A3, B4
WL91	green ash, narrowleaf cattail, reed canary grass, yellow nutsedge	F1, F3	A1, A3, C3, B9, B13, B16
WL92	green ash, eastern cottonwood, poison ivy, devil's beggarsticks, crested sedge, slender toothwort	F1, F3, F6	A1, A3, B9, B16
WL93	Phalaris arundinacea, Carex lupuliformis, Glyceria striata, Trifolium pratense	F3	B10, B13
WL94	green sedge, spicebush, foxtail sedge, jumpseed	F3	B9, B16
WL95	sugar maple, green ash, silky dogwood, stinging nettle	F3	A3, B16, D5
WL96	green ash, Washington hawthorn, Fraxinus pennsylvanica, Tuckerman's sedge, red-top grass, hop-like sedge, Walter's sedge, nodding sedge	F3	B9, B16, D2
WL97	reed canary grass	F3	A1, C3
WL98	narrowleaf cattail, reed canary grass	*Soils assumed hydric	A1
WL99	green ash, crested sedge, lance-leaved sedge	F3	B8, B9, B16
WL100	reed canary grass, foxtail sedge, giant goldenrod	F6	B10, D2
WL101	green ash, reed canary grass, narrowleaf cattail	F6	A1, A3, B9
WL102	common reed, reed canary grass	F3	C3
WL103	eastern cottonwood, green ash, reed canary grass, riverbank grape	F3	B16, D2, D5
WL104	green ash, eastern cottonwood, riverbank grape	F3	B16, D2, D5
WL105	soft-stem club rush, soft rush, creeping bentgrass, reed canary grass	F3, F6	C3, C9, D2, D5
WL106	spicebush, gray dogwood, joe pye weed, common boneset, Canada goldenrod, dark green bulrush, lance-leaved aster	F3	D2, D5
WL107	red maple, American basswood, American elm, spicebush, buckthorn, American spikenard, Virginia creeper	F3	B16, D2, D5
WL108	green ash, reed canary grass, stinging nettle, creeping jenny, riverbank grape	F6	C3, D2, D5
WL109	narrowleaf cattail, joe pye weed, reed canary grass	*Soils assumed hydric	A1, A2, A3, D2, D5



Wetland ID	Dominant Vegetation	Hydric Soil Indicators ¹	Wetland Hydrology Indicators ¹
WL110	green ash, silver maple, silky dogwood, creeping jenny, dark green bulrush, lance-leaved aster	F3	C3, D2, D5
WL111	silky dogwood, green ash, gray dogwood, silver maple, riverbank grape, calico aster, joe pye weed	F3	C3, D2, D5
WL112	silver dogwood, green ash, reed canary grass, bush honeysuckle	*Soils assumed hydric (on non-participating parcel)	C9, D2, D5
WL113	reed canary grass	*Soils assumed hydric (on non-participating parcel)	C9, D2, D5
WL114	eastern cottonwood, grey dogwood, green ash, common buckthorn, lance-leaved aster, Canada goldenrod, reed canary grass	F3	B10, B16, C9, D2, D5
WL115	green ash, morrow's honeysuckle	F3	A1, A2, A3, D2
WL116	creeping jenny, lance-leaved aster, reed canary grass	F3	A1, A2, A3, C3, D5
WL117	creeping jenny, sweet woodreed, lance-leaved aster	A11	D2, D5
WL118	reed canary grass, creeping jenny	F3	A2, A3, D2, D5
WL119	Switchgrass	F3	A1, C3

¹Indicator codes from Regional Supplement to the USACE Wetland Delineation Manual: Northcentral and Northeast (V 2.0).

**CIDER SOLAR FARM
WETLAND AND STREAM DELINEATION REPORT AND FUNCTION AND VALUE ASSESSMENT**

Appendix C Stream Summary Table

Appendix C STREAM SUMMARY TABLE



Appendix C. Stream Summary Table

Stream ID	Linear Feet of Stream Within Study Area (feet)	Flow Type ¹	Stream Name ²	NYSDEC Stream Class (Standard)	Waterbody Index Number (WIN)	Stream Order ³	Latitude of Centroid	Longitude of Centroid	Anticipated Federal Jurisdiction	Anticipated State Jurisdiction	Detailed Figure/Map Sheet Number(s)
ST01	893	EPH	N/A	Class D	N/A, Unmapped ephemeral stream	1	43.109249	-78.256226			2
ST02	818	EPH	N/A	Class D	N/A, Unmapped ephemeral stream	1	43.109371	-78.254124			2
ST03	783	EPH	N/A	Class D	N/A, Unmapped ephemeral stream	1	43.109380	-78.255172			2
ST04	2256	PER	UNT to Oak Orchard Creek	Class C (C)	ONT. 138-28	3	43.107432	-78.253314	X		2
ST05	2014	EPH	UNT to Oak Orchard Creek	Class C (C)	ONT. 138-28-0	1	43.101220	-78.257564	X		1, 2, 9
ST06	379	EPH	N/A	Class D	N/A, Unmapped ephemeral stream	1	43.107238	-78.257771			2
ST07	1730	INT	UNT to Oak Orchard Creek	Class C (C)	ONT. 138-28-0	1	43.099543	-78.264249	X		1
ST08	1518	PER	UNT to Oak Orchard Creek	Class C (C)	ONT. 138-28	3	43.100391	-78.251301	X		2, 9
ST09	2236	EPH	UNT to Oak Orchard Creek	Class D	N/A, Unmapped tributary of ONT. 138-28-1a	1	43.089147	-78.275807	X		8
ST10	948	EPH	UNT to Oak Orchard Creek	Class D	N/A, Unmapped tributary of ONT. 138-28-1a	1	43.090501	-78.276752	X		8
ST11	844	EPH	UNT to Oak Orchard Creek	Class D	N/A, Unmapped tributary of ONT. 138-28-1	1	43.093699	-78.236294	X		10
ST12	1472	EPH	UNT to Oak Orchard Creek	Class C (C)	ONT. 138-28-1a	2	43.091429	-78.276148	X		8
ST13	660	EPH	UNT to Oak Orchard Creek	Class D	N/A, Unmapped tributary of ONT. 138-28-1a	1	43.091513	-78.274903	X		8
ST14	365	EPH	UNT to Oak Orchard Creek	Class C (C)	ONT. 138-28-1a	1	43.090555	-78.272871	X		8
ST15	867	EPH	UNT to Oak Orchard Creek	Class D	N/A, Unmapped tributary of ONT. 138-28-1a	1	43.092689	-78.264716	X		8
ST16	1192	EPH	UNT to Oak Orchard Creek	Class C (C)	ONT. 138-28-1a	1	43.091220	-78.266447	X		8
ST17	499	EPH	N/A	Class D	N/A, Unmapped ephemeral stream	1	43.087338	-78.253937			15
ST18	187	EPH	N/A	Class D	N/A, Unmapped ephemeral stream	1	43.087790	-78.254075			15
ST19	453	EPH	N/A	Class D	N/A, Unmapped ephemeral stream	1	43.088076	-78.254364			15
ST20	87	EPH	N/A	Class D	N/A, Unmapped ephemeral stream	1	43.088136	-78.255273			15
ST21	540	EPH	N/A	Class D	N/A, Unmapped ephemeral stream	1	43.091092	-78.252375			9, 15

Stream ID	Linear Feet of Stream Within Study Area (feet)	Flow Type ¹	Stream Name ²	NYSDEC Stream Class (Standard)	Waterbody Index Number (WIN)	Stream Order ³	Latitude of Centroid	Longitude of Centroid	Anticipated Federal Jurisdiction	Anticipated State Jurisdiction	Detailed Figure/Map Sheet Number(s)
ST22	3565	PER	UNT to Oak Orchard Creek	Class D	N/A, Unmapped tributary of ONT. 138-28-1	2	43.092921	-78.240361	X		9, 10, 15
ST23	201	EPH	UNT to Oak Orchard Creek	Class C (C)	ONT. 138-28-1	1	43.089790	-78.241936	X		15, 16
ST24	1487	PER	UNT to Oak Orchard Creek	Class C (C)	ONT. 138-29	2	43.096144	-78.231890	X		10
ST25	143	EPH	UNT to Oak Orchard Creek	Class D	N/A, Unmapped tributary of ONT. 138-28-1	1	43.090650	-78.246399	X		15
ST26	265	PER	UNT to Oak Orchard Creek	Class C (C)	ONT. 138-28-1	2	43.090799	-78.246908	X		9, 15
ST27	732	PER	UNT to Oak Orchard Creek	Class D	ONT. 138-29	1	43.095006	-78.227888	X		10
ST28	384	EPH	N/A	Class D	N/A, Unmapped ephemeral stream	1	43.095252	-78.232488			10
ST29	1565	EPH	N/A	Class D	N/A, Unmapped ephemeral stream	1	43.093329	-78.232606			10, 16
ST30	186	EPH	UNT to Oak Orchard Creek	Class D	N/A, Unmapped tributary of ONT. 138-29	1	43.095347	-78.227816	X		10
ST31	2272	EPH	UNT to Oak Orchard Creek	Class D	N/A, Unmapped tributary of ONT. 138-29	1	43.090651	-78.217565	X		11, 17
ST32	2483	INT	UNT to Oak Orchard Creek	Class C (C)	ONT. 138-29	1	43.093823	-78.219454	X		11
ST33	44	EPH	UNT to Oak Orchard Creek	Class D	N/A, Unmapped tributary of ONT. 138-29	1	43.093698	-78.219709	X		11
ST34	772	EPH	UNT to Oak Orchard Creek	Class C (C)	ONT. 138-29-2	1	43.097802	-78.218842	X		11
ST35	1487	INT	N/A	Class D	N/A, Unmapped intermittent stream	1	43.080572	-78.217981	X		17
ST36	2132	PER	UNT to Oak Orchard Creek	Class C (C)	ONT. 138-29	2	43.100676	-78.223763	X		4, 10, 11
ST37	2355	INT	UNT to Oak Orchard Creek	Class C (C)	ONT. 138-29	1	43.105768	-78.227678	X		3
ST38	695	INT	N/A	Class D	N/A, Unmapped intermittent stream	1	43.085308	-78.213069	X		17
ST39	1141	PER	UNT to Oak Orchard Creek	Class C (C)	ONT. 138-35	3	43.108991	-78.179080	X		6
ST40	352	PER	UNT to Oak Orchard Creek	Class C (C)	ONT. 138-35	3	43.111731	-78.168173	X		7
ST41	30	EPH	UNT to Oak Orchard Creek	Class D	N/A, Unmapped tributary to ONT. 138-35	1	43.109413	-78.163920	X		7
ST42	634	PER	UNT to Oak Orchard Creek	Class C (C)	ONT. 138-35	3	43.107304	-78.180573	X		6, 13

Stream ID	Linear Feet of Stream Within Study Area (feet)	Flow Type ¹	Stream Name ²	NYSDEC Stream Class (Standard)	Waterbody Index Number (WIN)	Stream Order ³	Latitude of Centroid	Longitude of Centroid	Anticipated Federal Jurisdiction	Anticipated State Jurisdiction	Detailed Figure/Map Sheet Number(s)
ST43	62	PER	UNT to Oak Orchard Creek	Class C (C)	ONT. 138-35	3	43.100356	-78.186585	X		13
ST44	1609	EPH	UNT to Oak Orchard Creek	Class C (C)	ONT. 138-35-1	2	43.098983	-78.190044	X		12, 13
ST45	2167	EPH	UNT to Oak Orchard Creek	Class C (C)	ONT. 138-35	2	43.097470	-78.186267	X		13, 19
ST46	521	EPH	UNT to Oak Orchard Creek	Class D	N/A, Unmapped tributary to ONT. 138-35	1	43.099466	-78.187051	X		13
ST47	826	PER	UNT to Oak Orchard Creek	Class C (C)	ONT. 138-36	2	43.101219	-78.156936	X		14
ST48	831	INT	UNT to Oak Orchard Creek	Class C (C)	ONT. 138-36	1	43.094270	-78.177059	X		19
ST49	1162	PER	UNT to Oak Orchard Creek	Class C (C)	ONT. 138-36	1	43.093127	-78.175804	X		19
ST50	32	EPH	UNT to Oak Orchard Creek	Class D	N/A, Unmapped tributary to ONT. 138-36	1	43.094016	-78.177466	X		19
ST51	35	INT	UNT to Oak Orchard Creek	Class D	N/A, Unmapped tributary of ONT-134	1	43.093205	-78.182279	X		19
ST52	282	EPH	N/A	Class D	N/A, Unmapped ephemeral stream	1	43.098598	-78.179128			13
ST53	755	EPH	UNT to Oak Orchard Creek	Class C (C)	ONT. 138-32	1	43.099251	-78.204137	X		12
ST54	849	PER	UNT to Oak Orchard Creek	Class C (C)	N/A, Unmapped tributary of ONT. 138-32	1	43.107737	-78.205334	X		4, 5
ST55	35	PER	UNT to Oak Orchard Creek	Class C (C)	N/A, Unmapped tributary of ONT. 138-32	1	43.108320	-78.203721	X		5
ST56	269	EPH	UNT to Oak Orchard Creek	Class C (C)	ONT. 138-28-1	1	43.088484	-78.241125	X		15, 16
ST57	780	PER	N/A	Class C (C)	N/A, Unmapped perennial stream	1	43.089455	-78.214725	X		17
ST58	965	EPH	N/A	Class D	N/A, Unmapped ephemeral stream	1	43.092969	-78.204404			12, 18
ST59	869	PER	UNT to Oak Orchard Creek	Class C (C)	ONT. 138-35	2	43.088968	-78.198680	X		18
ST60	377	EPH	UNT to Oak Orchard Creek	Class D	N/A, Unmapped tributary of ONT. 138-35-1	1	43.097684	-78.192172	X		12
ST61	1256	EPH	UNT to Oak Orchard Creek	Class C (C)	ONT. 138-28-1	2	43.087797	-78.240153	X		15, 16
ST62	184	EPH	UNT to Oak Orchard Creek	Class D	N/A, Unmapped tributary of ONT. 138-35-1	1	43.098602	-78.192513	X		12
ST63	1767	INT	UNT to Oak Orchard Creek	Class C (C)	ONT. 138-28-1b	1	43.087548	-78.268950	X		8



Stream ID	Linear Feet of Stream Within Study Area (feet)	Flow Type ¹	Stream Name ²	NYSDEC Stream Class (Standard)	Waterbody Index Number (WIN)	Stream Order ³	Latitude of Centroid	Longitude of Centroid	Anticipated Federal Jurisdiction	Anticipated State Jurisdiction	Detailed Figure/Map Sheet Number(s)
ST64	648	PER	UNT to Oak Orchard Creek	Class C (C)	ONT. 138-27	2	43.095648	-78.277734	X		8
ST65	457	EPH	UNT to Oak Orchard Creek	Class D	N/A, Unmapped tributary of ONT. 138-27	1	43.094899	-78.277121	X		8
ST66	580	EPH	N/A	Class D	N/A, Unmapped ephemeral stream	1	43.109460	-78.243608			2
ST67	1375	EPH	N/A	Class D	N/A, Unmapped ephemeral stream	1	43.107589	-78.242709			2
ST68	1135	EPH	UNT to Oak Orchard Creek	Class C (C)	ONT. 138-28-1	1	43.090366	-78.243299	X		15, 16
ST69	166	EPH	UNT to Oak Orchard Creek	Class C (C)	ONT. 138-29	1	43.105128	-78.226304	X		3
ST70	1968	EPH	UNT to Oak Orchard Creek	Class D	N/A, Unmapped tributary to ONT. 138-35	1	43.108772	-78.165747	X		7
ST71	808	EPH	UNT to Oak Orchard Creek	Class C (C)	ONT. 138-28	3	43.089109	-78.264444	X		8
ST72	172	EPH	N/A	Class D	N/A, Unmapped ephemeral stream	1	43.111191°	-78.197936°			5
ST73	42	EPH	N/A	Class D	N/A, Unmapped ephemeral stream	1	43.114591°	-78.197849°			5
ST74	98	EPH	N/A	Class D	N/A, Unmapped ephemeral stream	1	43.092438°	-78.256406°			9
ST75	1,314	PER	UNT to Oak Orchard Creek	Class C	ONT. 138-28	3	43.092426°	-78.255747°	X		9
ST76	31	INT	N/A	Class D	N/A, Unmapped tributary of ONT. 138-28	1	43.093051°	-78.257296°	X		9

¹ EPH = Ephemeral; INT = Intermittent; PER = Perennial

² UNT = Unnamed tributary

³ Using Strahler Method

Appendix C. Stream Data Collected in Field

Stream ID	Top of Bank Width (feet)	Top of Bank Depth (feet)	Ordinary High Water Mark Width (feet)	Ordinary High Water Mark Depth (feet)	Substrate
ST01	15	1	10	0.5	Sand, silt, clay
ST02	10	1.5	5	0.75	Sand, silt, clay
ST03	18	2.5	12	1.5	Sand, silt, clay
ST04	35	8	25	2	Sand, silt, clay
ST05	12	3	5	0.5	Sand, silt, clay
ST06	8	3	5	0.5	Silt, clay
ST07	30	2.5	10	1.5	Cobble, silt, clay
ST08	40	7	30	2	Cobble, gravel, clay
ST09	12	5	8	1	Cobble, gravel, clay
ST10	6	4	3	0.75	Cobble, gravel, clay
ST11	5	1	4	0.5	Sand, silt, clay
ST12	15	4	10	1	Cobble, gravel, clay
ST13	6	3	2	0.5	Clay, gravel
ST14	10	4	4	0.5	Silt, clay
ST15	7	4	5	1	Silt, clay
ST16	8	4	4	1	Silt, clay
ST17	5	0.5	5	0.5	Silt, clay
ST18	5	0.5	5	0.5	Silt, clay
ST19	5	0.25	4	0.15	Silt, clay
ST20	8	0.5	5	0.25	Silt, clay
ST21	5	1.5	3	0.5	Silt, clay
ST22	25	7	10	0.75	Silt, clay
ST23	5	1	3	0.5	Cobble, gravel, clay
ST24	25	6	11	1	Silt, clay
ST25	5	0.5	3	0.25	Cobble, silt, clay
ST26	12	1	6	0.5	Rocks cobbles silt clay
ST27	15	5	8	1	Clay
ST28	5	2.5	3	0.5	Silt, clay
ST29	15	3	5	0.75	Silt, clay
ST30	12	8	8	4	Cobble, sand, silt, clay
ST31	10	5	3	0.5	Gravel, clay, silt, sand
ST32	25	3.5	8	0.5	Boulder, cobble, gravel, sand
ST33	5	2	3	0.75	Cobble, gravel, sand
ST34	10	1	8	0.5	Sand, silt, clay
ST35	20	3	10	1	Cobble, gravel, sand, clay
ST36	12	5	6	3	Sand, silt, clay
ST37	5	0.5	3	0.25	Cobble, gravel, sand
ST38	15	4.5	10	1	Gravel, sand, clay
ST39	9	3	8	1	Sand, silt, clay
ST40	8	3	7	1	Silt, clay
ST41	6	1	4	0.25	Silt, clay
ST42	9	3	10	1	Sand/silt/clay
ST43	8	3	7	1	Cobble, gravel, sand, silt, clay
ST44	4	1	4	1	Concrete
ST45	6.5	2	6	1	Sand, silt, clay
ST46	4	1	6	1	Sand, silt, clay
ST47	6	2	4	0.5	Sand silt clay
ST48	20	6	15	2	Cobble, sand, silt, clay
ST49	6	0.25	5	0.25	Clay
ST50	3	1	3	0.25	Clay
ST51	6	1	5	0.5	Clay
ST52	5	1	4	0.25	Cobble, silt, sand, clay
ST53	4	0.25	4	0.25	Clay
ST54	8	1.5	6	0.5	Silt, clay
ST55	7	0.25	4	0.25	Silt, clay

ST56	5	1	5	0.5	Sand silt clay cobble
ST57	6	1	5	1	Silt, clay
ST58	5	1	4	0.25	Clay
ST59	4	0.25	4	0.25	Silt, clay
ST60	4	1	3	0.25	Silt, concrete
ST61	5	1	3	0.5	Cobble, gravel, sand
ST62	4	1	3	0.25	Concrete, silt
ST63	15	5	5	1	Sand, silt, clay
ST64	15	6	7	1	Sand, silt, clay
ST65	12	6	3	0.5	Sand, silt, clay
ST66	10	2	3	0.5	Sand, silt, clay
ST67	10	1	5	0.5	Sand, silt, clay
ST68	7	1.5	4	0.5	Sand, silt, clay
ST69	20	4	8	0.5	Cobble, sand, silt, clay
ST70	10	4	5	0.5	Sand, silt, clay
ST71	10	4	5	0.5	Sand, silt, clay
ST72	5	0.75	1	0.25	Sand, silt, clay
ST73	1	0.5	0.75	0.25	Sand, silt
ST74	2	0.75	0.75	0.25	Sand, silt, clay
ST75	40	4	35	2	Sand, gravel, cobble
ST76	2	0.75	1	0.5	Sand, silt, clay

**CIDER SOLAR FARM
WETLAND AND STREAM DELINEATION REPORT AND FUNCTION AND VALUE ASSESSMENT**

Appendix D Representative Photos

Appendix D REPRESENTATIVE PHOTOS





Photo 1: Wetland WL01, PEM. Looking north. Taken 7/6/2020.



Photo 2: Wetland WL01, PFO. Looking west. PFO wetland. Taken 7/6/2020.



Photo 3: Wetland WL01, Upland point. Looking southeast. Taken 7/6/2020.



Photo 4: Wetland WL02, PFO. Looking east. Taken 7/7/2020.



Photo 5: Wetland WL02, Upland point. Looking south. Taken 7/6/2020.



Photo 6: Wetland WL03, PFO. Looking south. Taken 7/7/2020.



Photo 7: Wetland WL03, Upland point. Looking northeast. Taken 7/7/2020.



Photo 8: Wetland WL04, PEM. Looking north. Taken 7/7/2020.



Photo 9. Wetland WL04, PSS. Looking south. Taken 7/24/2020.



Photo 10. Wetland WL04, PFO. Looking north. Taken 7/24/2020.



Photo 11: Wetland WL04, Upland point. Looking east. Taken 7/7/2020.



Photo 12: Wetland WL05, PEM. Looking southwest. Taken 7/7/2020.

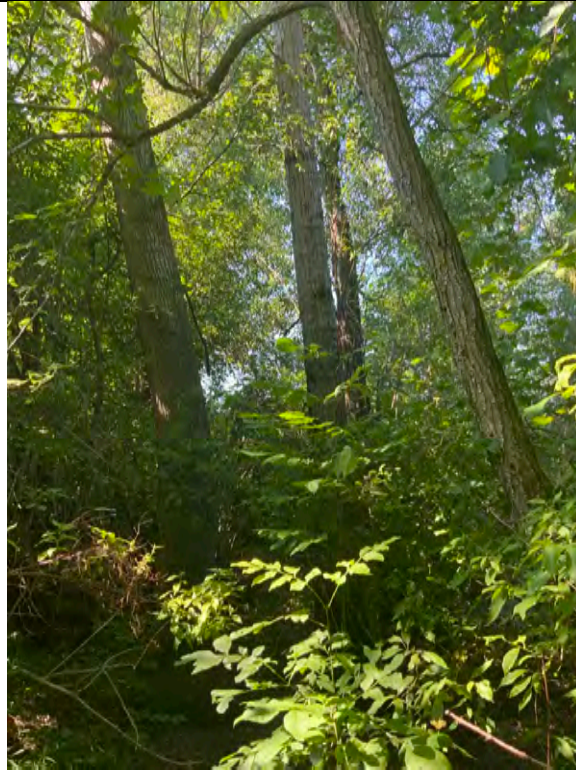


Photo 13: Wetland WL05, PFO. Looking southwest. Taken 7/9/2020.



Photo 14: Wetland WL06, PEM. Looking southwest. Taken 7/7/2020.



Photo 15: Wetland WL06, looking south. Upland point.



Photo 16: Wetland WL07, PSS. Looking east. Taken 7/8/2020.



Photo 17: Wetland WL07, Upland point. Looking north. Taken 7/8/2020.



Photo 18: Wetland WL08, PEM. Looking south. Taken 7/8/2020.



Photo 19: Wetland WL08, Upland point. Looking east. Taken 7/8/2020.



Photo 20: Wetland WL09, PEM. Looking west. Taken 7/9/2020.



Photo 21: Wetland WL09, Upland point. Looking south. Taken 7/9/2020.



Photo 22: Wetland WL10, PEM. Looking west. Taken 7/9/2020.



Photo 23: Wetland WL10, Upland point. Looking north. Taken 7/9/2020.



Photo 24: Wetland WL11, PEM. Looking north. Taken 7/9/2020.



Photo 25: Wetland WL11, Upland point. Looking north. Taken 7/9/2020.



Photo 26: Wetland WL12, PEM. Looking north. Taken 7/9/2020.



Photo 27: Wetland WL12, Upland point. Looking north. Taken 7/9/2020.



Photo 28: Wetland WL13, PEM. Looking west. Taken 7/10/2020.

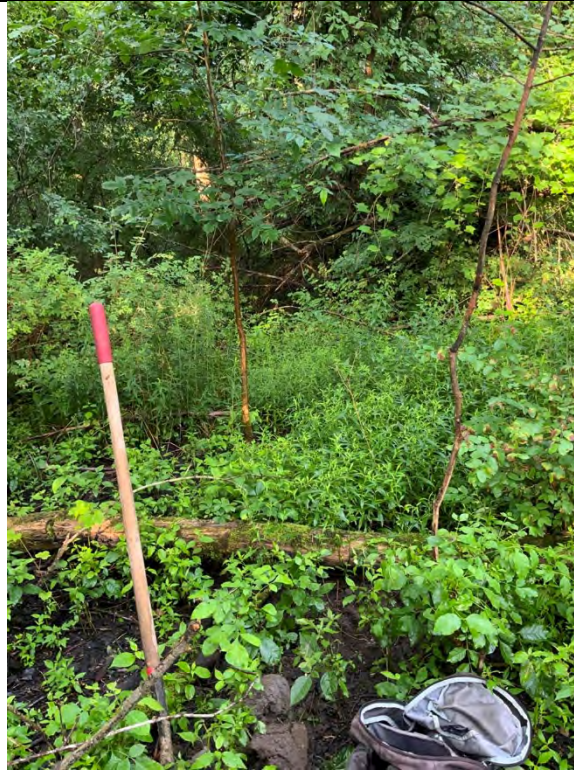


Photo 29: Wetland WL13, PFO. Looking west. Taken 7/10/2020.



Photo 30: Wetland WL13, Upland point. Looking northwest. Taken 7/10/2020.



Photo 31: Wetland WL14, PUB. Looking northwest. Taken 7/9/2020.



Photo 32: Wetland WL15, PFO. Looking north. Taken 7/10/2020.



Photo 33: Wetland WL15, Upland point. Looking northeast. Taken 7/10/2020.



Photo 34: Wetland WL16, PEM. Looking east. Taken 7/10/2020.



Photo 35: Wetland WL16, Upland point. Looking south. Taken 7/10/2020.



Photo 36: Wetland WL17, PEM. Looking west. Taken 7/10/2020.



Photo 37: Wetland WL17, PFO. Looking west. Taken 7/20/2020.



Photo 38: Wetland WL17, Upland point. Looking west. Taken 7/10/2020.



Photo 39: Wetland WL18, PEM. Looking southwest. Taken 7/13/2020.



Photo 40: Wetland WL18, PFO. Looking south. Taken 7/13/2020.



Photo 41: Wetland WL18, Upland point. Looking northeast. Taken 7/13/2020.



Photo 42: Wetland WL19, PSS. Looking west. Taken 7/13/2020.



Photo 43: Wetland WL19, Upland point. Looking east. Taken 7/13/2020.



Photo 44: Wetland WL20, PEM. Looking east. Taken 7/14/2020.



Photo 45: Wetland WL20, PFO. Looking west. Taken 7/14/2020.



Photo 46: Wetland WL20, PSS. Looking east. Taken 7/15/2020.



Photo 47: Wetland WL20, Upland point. Looking east. Taken 7/14/2020.

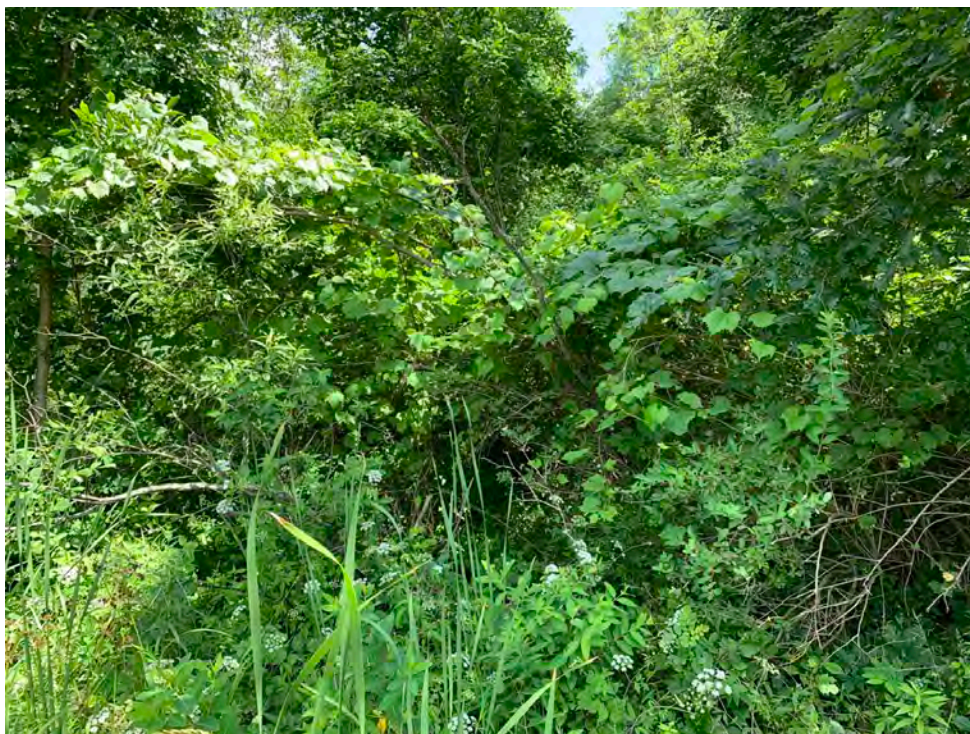


Photo 48. Wetland WL21, PEM. Looking north. Taken 7/15/2020.



Photo 49: Wetland WL22, PFO. Looking west. Taken 9/23/2020.



Photo 50: Wetland WL22, Upland point. Looking northwest. Taken 7/15/2020.



Photo 51. Wetland WL23, PSS. Looking southwest. Taken 10/9/2020.



Photo 52: Wetland WL24, PFO. Looking south. Taken 7/15/2020.



Photo 53: Wetland WL24, Upland point. Looking north. Taken 7/15/2020.



Photo 54: Wetland WL25, PFO. Looking east. Taken 9/25/2020.



Photo 55: Wetland WL25, Upland point. Looking south. Taken 9/25/2020.



Photo 56: Wetland WL26, PEM. Looking west. Taken 7/16/2020.



Photo 57: Wetland WL26, PSS. Looking east. Taken 7/16/2020.



Photo 58: Wetland WL26, Upland point. Looking south. Taken 7/16/2020.



Photo 59: Wetland WL27, PSS. Looking southwest. Taken 10/9/2020.



Photo 60: Wetland WL27, looking west. Upland point. Taken 7/16/2020.



Photo 61: Wetland WL28, PEM. Looking north. Taken 7/20/2020.



Photo 62: Wetland WL28, PFO. Looking northwest. Taken 7/16/2020.



Photo 63: Wetland WL28, Upland point. Looking east. Taken 7/20/2020.



Photo 64: Wetland WL29, PEM. Looking west. Taken 7/17/2020.



Photo 65: Wetland WL29, PFO. Looking north. Taken 7/17/2020.



Photo 66: Wetland WL29, PSS. Looking north. Taken 7/17/2020.



Photo 67: Wetland WL29, Upland point. Looking southeast. Taken 7/17/2020.



Photo 68: Wetland WL30, PEM. Looking west. Taken 7/24/2020.



Photo 69: Wetland WL30, Upland point. Looking west. Taken 7/24/2020.

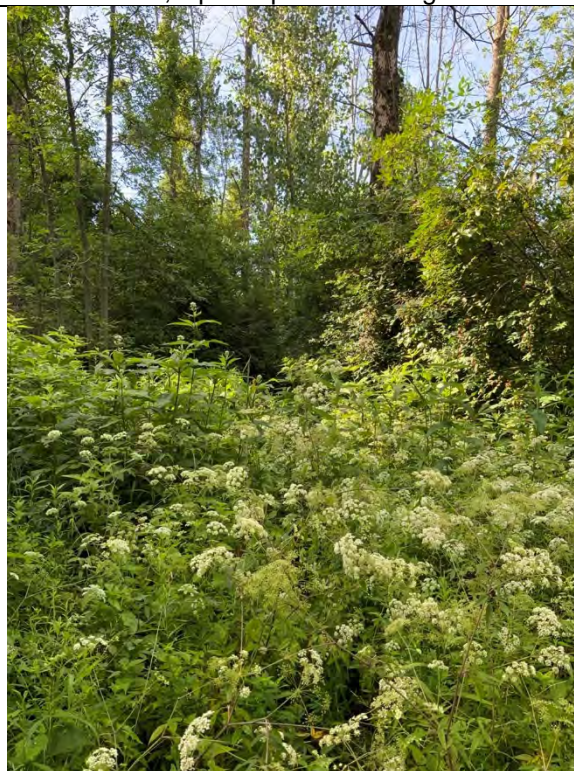


Photo 70: Wetland WL31, PFO. Looking south. Taken 7/20/2020.



Photo 71: Wetland WL31, PSS. Looking southwest. Taken 7/20/2020.



Photo 72: Wetland WL31, Upland point. Looking north. Taken 7/20/2020.



Photo 73: Wetland WL32, PEM. Looking north. Taken 7/20/2020.



Photo 74: Wetland WL32, Upland point. Looking east. Taken 7/20/2020.



Photo 75: Wetland WL33, PEM. Looking north. Taken 7/20/2020.



Photo 76: Wetland WL33, PFO. Looking south. Taken 7/20/2020.



Photo 77: Wetland WL33, Upland point. Looking south. Taken 7/20/2020.



Photo 78: Wetland WL34, PFO. Looking east. Taken 7/20/2020.



Photo 79: Wetland WL34, Upland point. Looking northeast. Taken 7/21/2020.



Photo 80: Wetland WL35, PEM. Looking northeast. Taken 7/21/2020.



Photo 81: Wetland WL35, Upland point. Looking north. Taken 7/21/2020.



Photo 82: Wetland WL36, PFO. Looking east. Taken 7/21/2020.



Photo 83: Wetland WL36, Upland point. Looking south. Taken 7/21/2020.



Photo 84: Wetland WL37, PEM. Looking northwest. Taken 7/21/2020.



Photo 85: Wetland WL37/WL38 Upland point. Looking northwest. Taken 7/21/2020.



Photo 86: Wetlands WL38, PEM. Looking west. Taken 7/21/2020.



Photo 87: Wetland WL39, PSS. Looking east. Taken 7/21/2020.



Photo 88: Wetland WL39, PFO. Looking north. Taken 7/21/2020.



Photo 89: Wetland WL39, PEM. Looking north. Taken 7/21/2020.



Photo 90: Wetland WL39, Upland point. Looking north. Taken 7/21/2020.



Photo 91: Wetland WL40, PFO. Looking northeast. Taken 7/21/2020.



Photo 92: Wetland WL40, Upland point. Looking south. Taken 7/21/2020.



Photo 93: Wetland WL41, PFO. Looking north. Taken 7/21/2020.



Photo 94: Wetland WL41, Upland point. Looking southeast. Taken 7/21/2020.



Photo 95: Wetland WL42, PFO. Looking northwest. Taken 10/1/2020.



Photo 96: Wetland WL42, Upland point. Looking north. Taken 10/1/2020.



Photo 97: Wetland WL43, PEM. Looking north. Taken 7/21/2020.



Photo 98: Wetland WL43, PFO. Looking east. Taken 7/21/2020.



Photo 99: Wetland WL43, Upland point. Looking west. Taken 7/21/2020.



Photo 100: Wetland WL44, PEM. Looking southwest. Taken 7/21/2020.



Photo 101: Wetland WL44, Upland point. Looking north. Taken 7/21/2020.



Photo 102: Wetland WL45, PEM. Looking northwest. Taken 7/22/2020.



Photo 103: Wetland WL45, Upland point. Looking south. Taken 7/22/2020.



Photo 104: Wetland WL46, PEM. Looking west. Taken 7/22/2020.



Photo 105: Wetland WL46, PFO. Looking west. Taken 7/22/2020.



Photo 106: Wetland WL46, Upland point. Looking east. Taken 7/22/2020.



Photo 107: Wetland WL47, PEM. Looking west. Taken 7/22/2020.



Photo 108: Wetland WL47, PFO. Looking northeast. Taken 7/22/2020.



Photo 109: Wetland WL47, Upland point. Looking north. Taken 7/22/2020.



Photo 110: Wetland WL48, PEM. Looking south. Taken 7/22/2020.



Photo 111: Wetland WL48, Upland point. Looking south. Taken 7/22/2020.



Photo 112: Wetland WL49, PFO. Looking south. Taken 7/22/2020.



Photo 113: Wetland WL49, Upland point. Looking north. Taken 7/22/2020.



Photo 114: Wetland WL50, PEM. Looking northeast. Taken 7/23/2020.



Photo 115: Wetland WL50, Upland point. Looking east. Taken 7/23/2020.



Photo 116: Wetland WL51, PEM. Looking north. Taken 7/23/2020.



Photo 117: Wetland WL51, PFO. Looking north. Taken 7/23/2020.



Photo 118: Wetland WL51, Upland point. Looking west. Taken 7/23/2020.



Photo 119: Wetland WL52, PEM. Looking north. Taken 7/23/2020.



Photo 120: Wetland WL52, Upland point. Looking west. Taken 7/23/2020.



Photo 121: Wetland WL53, PEM. Looking south. Taken 7/23/2020.



Photo 122: Wetland WL53, PSS. Looking east. Taken 7/23/2020.



Photo 123: Wetland WL53, looking south. Upland point. Taken 7/23/2020.



Photo 124: Wetland WL54, PEM. Looking east. Taken 7/23/2020.



Photo 125: Wetland WL54, PFO. Looking south. Taken 9/28/2020.



Photo 126: Wetland WL54, Upland point. Looking east. Taken 7/23/2020.



Photo 127: Wetland WL55, PFO. Looking north. Taken 7/23/2020.



Photo 128: Wetland WL55, PSS. Looking west. Taken 7/23/2020.



Photo 129: Wetland WL55, Upland point. Looking east. Taken 7/23/2020.



Photo 130: Wetland WL56, PFO. Looking southeast. Taken 7/24/2020.



Photo 131: Wetland WL56, Upland point. Looking northwest. Taken 7/24/2020.



Photo 132: Wetland WL57, PFO. Looking southeast. Taken 7/13/2020.



Photo 133: Wetland WL57, Upland point. Looking south. Taken 7/8/2020.



Photo 134: Wetland WL58, PEM. Looking northeast. Taken 7/8/2020.



Photo 135: Wetland WL58, Upland point. Looking north. Taken 7/8/2020.



Photo 136: Wetland WL59, PEM. Looking south. Taken 7/8/2020.



Photo 137: Wetland WL59, Upland point. Looking southwest. Taken 7/8/2020.



Photo 138: Wetland WL60, PSS. Looking northwest. Taken 7/9/2020.



Photo 139: Wetland WL60, Upland point. Looking northwest. Taken 7/9/2020.



Photo 140: Wetland WL61, PSS. Looking northwest. Taken 7/9/2020.



Photo 141: Wetland WL61, Upland point. Looking southeast. Taken 7/9/2020.



Photo 142: Wetland WL62, PSS. Looking northwest. Taken 7/9/2020.



Photo 143: Wetland WL62, Upland point. Looking south. Taken 7/9/2020.



Photo 144: Wetland WL63, PSS. Looking north. Taken 7/10/2020.



Photo 145: Wetland WL63, Upland point. Looking north. Taken 7/10/2020.



Photo 146: Wetland WL64, PFO. Looking southeast. Taken 7/10/2020.



Photo 147: Wetland WL64, Upland point. Looking north. Taken 7/10/2020.



Photo 148: Wetland WL65, PEM. Looking south. Taken 7/10/2020.



Photo 149: Wetland WL65, Upland point. Looking north. Taken 7/10/2020.



Photo 150: Wetland WL66, PFO. Looking east. Taken 7/10/2020.



Photo 151: Wetland WL66, PSS. Looking east. Taken 7/10/2020.



Photo 152: Wetland WL66, Upland point. Looking north. Taken 7/10/2020.



Photo 153: Wetland WL67, PEM. Looking west. Taken 7/13/2020.



Photo 154: Wetland WL67, Upland point. Looking southwest. Taken 7/13/2020.



Photo 155: Wetland WL68, PFO. Looking north. Taken 7/16/2020.



Photo 156: Wetland WL68, Upland point. Looking west. Taken 7/16/2020.



Photo 157: Wetland WL69, PFO. looking north. Taken 7/13/2020.



Photo 158: Wetland WL69, Upland point. Looking south. Taken 7/13/2020.



Photo 1. Wetland WL70, PEM. Looking north. Taken 9/29/2020.



Photo 1. Wetland WL70, Upland Point. Looking south. Taken 9/29/2020



Photo 159. Wetland WL71, PFO. Looking north. Taken 7/14/2020.



Photo 160. Wetland WL71, Upland point. Looking east. Taken 7/14/2020.



Photo 161. Wetland WL72, PFO. Looking northeast. Taken 7/14/2020.



Photo 162. Wetland WL72, Upland Point. Looking north. Taken 7/14/2020.



Photo 163. Wetland WL73, PEM. Looking east. Taken 7/15/2020.



Photo 164. Wetland WL73, PEM. Looking east. Taken 7/15/2020.



Photo 165. Wetland WL80, PEM. Looking east. Taken 7/17/2020.



Photo 166. Wetland WL80, Upland point. Looking east. Taken 7/17/2020.



Photo 167. Wetland WL75, PFO. Looking west. Taken 7/15/2020.



Photo 168. Wetland WL75, Upland. Looking east. Taken 7/15/2020.



Photo 169. Wetland WL76, PEM. Looking . Taken 7/16/2020.



Photo 170. Wetland WL76, PEM. Looking . Taken 7/16/2020.



Photo 171. Wetland WL77, PFO. Looking east. Taken 7/16/2020.



Photo 172. Wetland WL77, Upland point. Looking northeast. Taken 7/16/2020.



Photo 173. Wetland WL78, PFO. Looking . Taken 7/16/2020.



Photo 174. Wetland WL78, Upland point. Looking . Taken 7/16/2020.



Photo 175. Wetland WL79, PFO. Looking southeast. Taken 9/30/2020.



Photo 176. Wetland WL79, Upland point. Looking northwest. Taken 9/30/2020.



Photo 177. Wetland WL80, PEM. Looking east. Taken 7/17/2020.



Photo 178. Wetland WL80, Upland point. Looking east. Taken 7/17/2020.



Photo 179. Wetland WL81, PEM. Looking southeast. Taken 7/17/2020.



Photo 180. Wetland WL81, PFO. Looking southwest. Taken 7/17/2020.



Photo 181. Wetland WL81, Upland point. Looking northwest. Taken 7/17/2020.

Left Intentionally Blank



Photo 182. Wetland WL82, PEM. Looking west. Taken 7/20/2020.



Photo 183. Wetland WL82, Upland point. Looking south. Taken 7/20/2020.



Photo 184. Wetland WL83, PEM. Looking north. Taken 7/20/2020.



Photo 185. Wetland WL83, Upland point. Looking east. Taken 7/20/2020.



Photo 186. Wetland WL84, PFO. Looking northwest. Taken 7/20/2020.



Photo 187. Wetland WL84, Upland point. Looking west. Taken 7/20/2020.



Photo 188. Wetland WL85, PEM. Looking northwest. Taken 9/29/2020.



Photo 189. Wetland WL85, PFO. Looking southwest. Taken 7/20/2020.



Photo 190. Wetland WL85, Upland point. Looking east. Taken 7/20/2020.

Left Intentionally Blank



Photo 191. Wetland WL86, PSS. Looking north. Taken 7/20/2020.



Photo 192. Wetland WL86, Upland point. Looking west. Taken 7/20/2020.



Photo 193. Wetland WL87, PFO. Looking north. Taken 7/21/2020.



Photo 194. Wetland WL87, Upland point. Looking north. Taken 7/21/2020.



Photo 195. Wetland WL88, PFO. Looking east. Taken 7/21/2020.

Left Intentionally Blank



Photo 196. Wetland WL89, PFO. Looking south. Taken 7/21/2020.



Photo 197. Wetland WL89, Upland point. Looking west. Taken 7/21/2020.



Photo 198. Wetland WL90, PFO. Looking south. Taken 7/21/2020.



Photo 199. Wetland WL90, Upland point. Looking west. Taken 7/21/2020.



Photo 200. Wetland WL91, PEM. Looking west. Taken 7/22/2020.



Photo 201. Wetland WL91, PFO. Looking east. Taken 7/23/2020.



Photo 202. Wetland WL91, Upland point. Looking northeast. Taken 7/23/2020.

Left Intentionally Blank



Photo 203. Wetland WL92, PEM. Looking east. Taken 7/22/2020.



Photo 204. Wetland WL92, PFO. Looking south. Taken 7/22/2020.



Photo 205. Wetland WL92, PSS. Looking east. Taken 9/29/2020.



Photo 206. Wetland WL92, Upland point. Looking west. Taken 7/22/2020.



Photo 207. Wetland WL93, PEM. Looking southwest. Taken 7/23/2020.



Photo 208. Wetland WL93, Upland point. Looking south. Taken 7/23/2020.



Photo 209. Wetland WL94, PFO. Looking north. Taken 7/23/2020.



Photo 210. Wetland WL94, Upland point. Looking north. Taken 7/23/2020.



Photo 211. Wetland WL95, PFO. Looking north. Taken 9/24/2020.



Photo 212. Wetland WL95, Upland point. Looking south. Taken 9/24/2020.



Photo 213. Wetland WL96, PFO. Looking north. Taken 7/23/2020.



Photo 214. Wetland WL96, PUB. Looking north. Taken 7/23/2020.



Photo 215. Wetland WL96, Upland point. Looking east. Taken 7/23/2020.

Left Intentionally Blank



Photo 216. Wetland WL97, PEM. Looking north. Taken 7/23/2020.



Photo 217. Wetland WL97, Upland point. Taken 7/23/2020.



Photo 218. Wetland WL98, PUB. Looking east. Taken 9/23/2020.



Photo 219. Wetland WL98, Upland point. Looking north. Taken 9/23/2020.



Photo 220. Wetland WL99, PFO. Looking north. Taken 7/23/2020.

Left Intentionally Blank



Photo 221. Wetland WL100, PEM. Looking west. Taken 7/23/2020.



Photo 222. Wetland WL100, Upland point. Looking north. Taken 7/23/2020.



Photo 223. Wetland WL101, PSS. Looking south. Taken 7/24/2020.



Photo 224. Wetland WL101. Upland point. Looking south. Taken 7/24/2020.



Photo 225. Wetland WL102, PEM. Looking west. Taken 7/24/2020.



Photo 226. Wetland WL102, Upland point. Looking south. Taken 7/24/2020.



Photo 227. Wetland WL103, PEM. Looking south. Taken 9/21/2020.



Photo 228. Wetland WL103, PFO. Looking west. Taken 9/21/2020.



Photo 229. Wetland WL103, Upland point. Looking northwest. Taken 9/21/2020.

Left Intentionally Blank



Photo 230. Wetland WL104, PFO. Looking south. Taken 9/22/2020.



Photo 231. Wetland WL104, Upland point. Looking north. Taken 9/22/2020.



Photo 232. Wetland WL105, PEM. Looking north. Taken 9/22/2020.



Photo 233. Wetland WL105, Upland point. Looking north. Taken 9/22/2020.



Photo 234. Wetland WL106, PEM. Looking west. Taken 9/22/2020.



Photo 235. Wetland WL106, Upland point. Looking west. Taken 9/22/2020.



Photo 236. Wetland WL107, PFO. Looking south. Taken 9/22/2020.

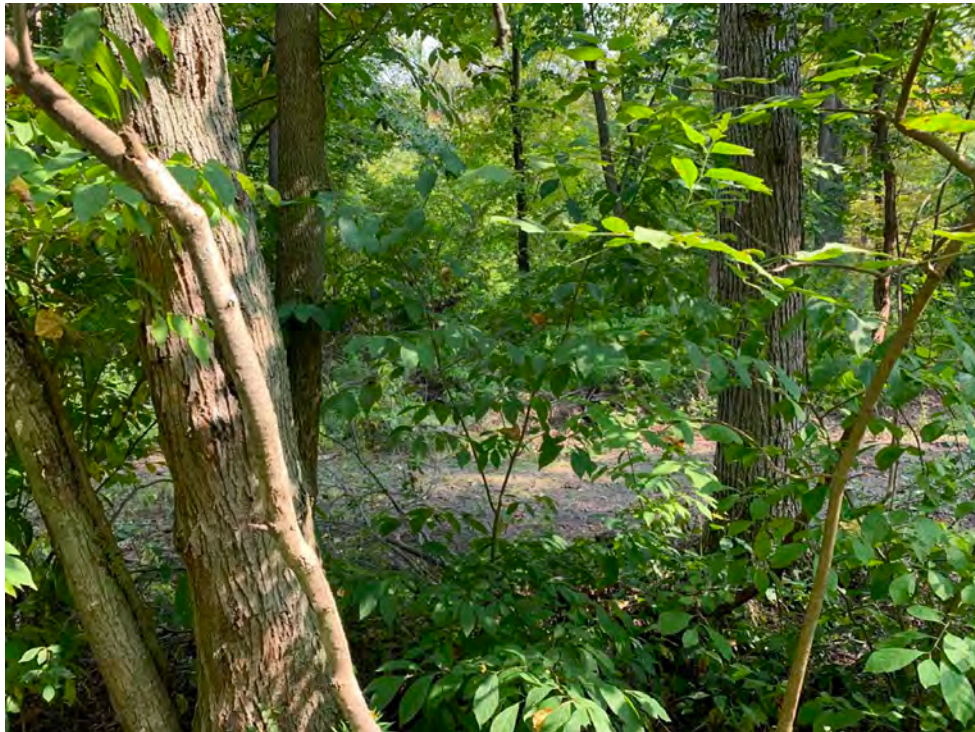


Photo 237. Wetland WL107, Upland point. Looking north. Taken 9/22/2020.



Photo 238. Wetland WL108, PSS. Looking north. Taken 9/23/2020.



Photo 239. Wetland WL108, Upland point. Looking east. Taken 9/23/2020.

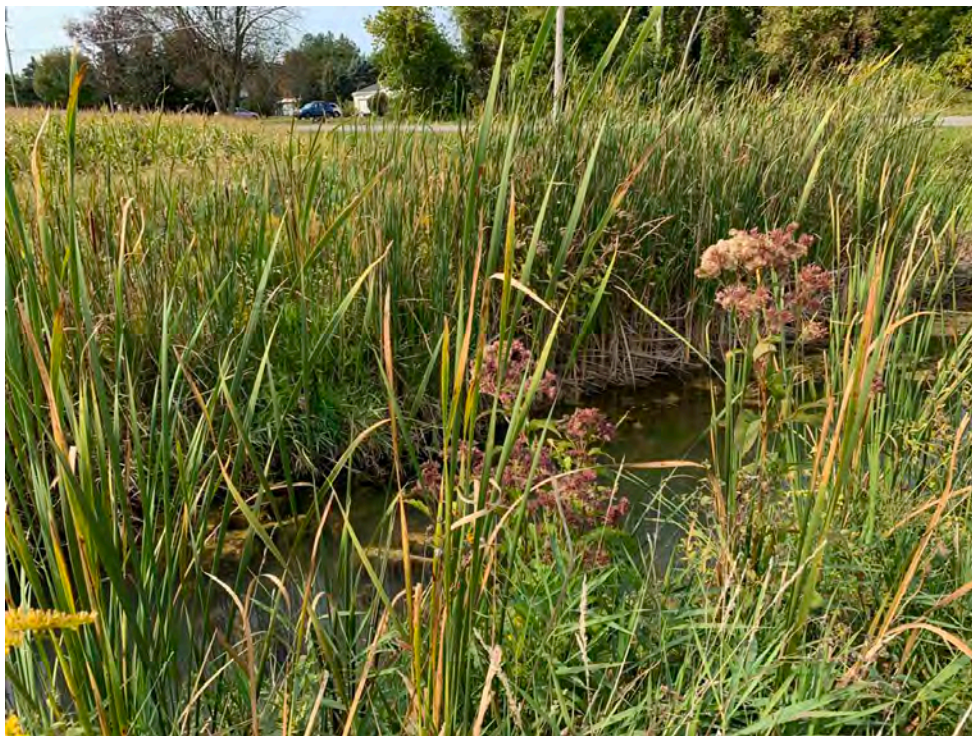


Photo 240. Wetland WL109, PEM. Looking northwest. Taken 9/22/2020.



Photo 241. Wetland WL109, Upland point. Looking north. Taken 9/22/2020.



Photo 242. Wetland WL110, PSS. Looking northwest. Taken 10/8/2020.



Photo 243. Wetland WL110, Upland point. Looking southeast. Taken 10/8/2020.



Photo 244. Wetland WL111, PFO. Looking south. Taken 10/8/2020.



Photo 245. Wetland WL111, Upland point. Looking east. Taken 10/8/2020.



Photo 246. WL57, PEM. Looking North. Taken 1/14/2021.



Photo 247. WL113, PEM. Looking East. Taken 1/14/2021.



Photo 248. WL113, PSS. Looking East. Taken 1/14/2021.



Photo 249. WL113, Upland Point. Looking East. Taken 1/14/2021.



Photo 250. WL114, PEM. Looking Northeast. Taken 1/14/2021.



Photo 251. WL114, PFO. Looking East. Taken 1/14/2021.



Photo 252. WL 114, Upland Point. Looking Northeast. Taken 1/14/2021.



Photo 253. WL115, PEM, Looking West. Taken 1/15/2021.



Photo 254. WL115, PFO. Looking North. Taken 1/15/2021.



Photo 255. WL115, Upland Point. Looking Northwest. Taken 1/15/2021.



Photo 256. WL116, PEM. Looking East. Taken 1/15/2021.



Photo 257. WL116, PFO. Looking East. Taken 1/15/2021.



Photo 258. WL116, Upland Point. Looking Northwest. Taken 1/15/2021.



Photo 259. WL117, PFO. Looking West. Taken 1/15/2021.



Photo 260. WL117, Upland Point. Looking West. Taken 1/15/2021.



Photo 261. WL118, PEM, Looking West. Taken 1/15/2021.



Photo 262. WL118, Upland Point. Looking Northwest. Taken 1/15/2021.



Photo 263. WL119, PEM. Looking South. Taken 1/15/2021.



Photo 264. WL119, Upland Point. Looking West. Taken 1/15/2021.

LEFT INTENTIONALLY BLANK



Photo 265. Perennial Stream ST26, Upstream. Looking east. Taken 7/16/2020.



Photo 266. Perennial Stream ST26, Downstream. Looking west. Taken 7/16/2020.



Photo 267. Intermittent Stream ST32, Upstream. Looking northwest. Taken 7/20/2020



Photo 268. Intermittent Stream ST32, Upstream. Looking southeast. Taken 7/20/2020



Photo 269. Ephemeral Stream ST68, Upstream. Looking north. Taken 9/23/2020.



Photo 270. Ephemeral Stream ST68, Downstream. Looking southeast. Taken 9/23/2020.



Photo 271. Ephemeral Stream ST72, Upstream. Looking North. Taken 1/14/2021.



Photo 272. Ephemeral Stream ST72, Downstream. Looking South. Taken 1/14/2021.



Photo 273. Intermittent Stream ST76, Upstream. Looking Southwest. Taken 1/15/2021.



Photo 274. Intermittent Stream ST76, Upstream. Looking Southwest. Taken 1/15/2021.



Photo 275. Perennial Stream ST75, Upstream. Looking Northwest. Taken 1/15/2021.



Photo 276. Perennial Stream ST75, Upstream. Looking Southeast. Taken 1/15/2021.